

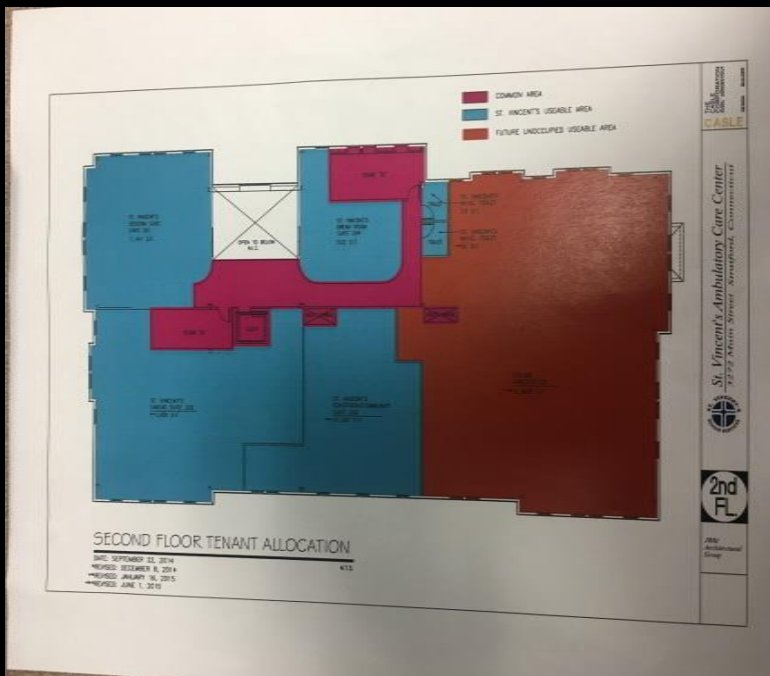


Medical for Lease

3272 Main St.
Stratford, CT 06614

- New medical building
- \$45 Sq. Ft. build out allowance
- Electric and heat included
- Other tenants include St. Vincent Emergency Care, onsite maintenance personnel
- Build to suit dental or orthodontics.

\$25/sf gross+ utilities



Martin-Caselli Real Estate

STRATFORD - BRIDGEPORT - NEWHAVEN - STAMFORD

Ray Martin
Broker

Office (203) 380-8762
Cell (203) 650-1181